



# Project Update and Recommendations

August 8, 2023

# Agenda [DRAFT OUTLINE]

- Project status
  - Public Engagement
  - Risk Prioritization Tool
  - **Recommendations**
  - Implementation
- Recommendations
  - Adaptive Development
  - Sustainable Future
  - Connected Communities
  - Collaborative Governance
  - Just Choices

# Completed and Ongoing Public Engagement Activity



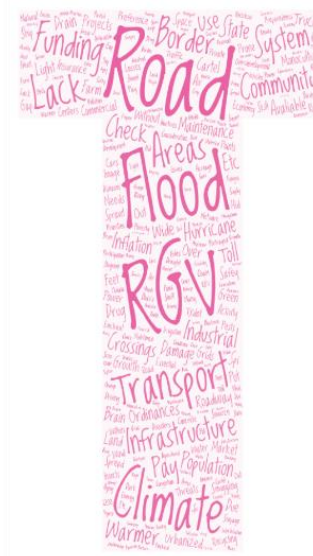
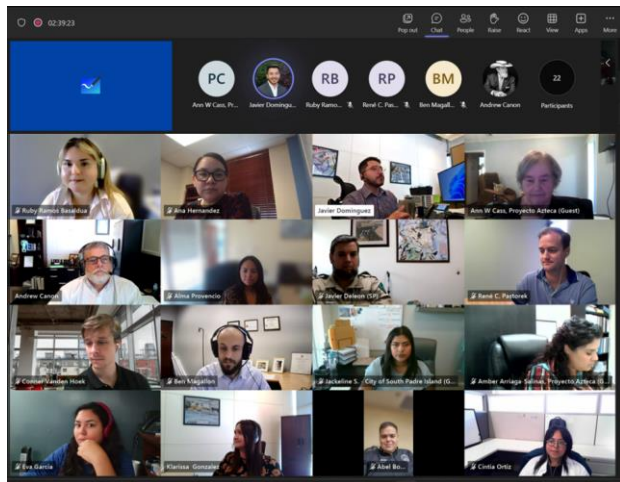
**RGVMPO**  
Resilience and Sustainability Analysis

La planificación es un proceso accionado por la comunidad.  
Ayúdenos a comprender mejor sus necesidades respondiendo unas preguntas breves.

¿Alguna vez ha sido afectado por factores estresantes en su comunidad?  
(Los factores estresantes representan peligros potenciales que afectan la resiliencia regional).

- Sí
- No
- No estoy seguro

¿Qué tan preparados se sienten usted y su vecindario o comunidad para



## Strengths

## Opportunities

- Recent drainage improvements
- Leveraging resources and capacity

Adaptive  
Development



- **Trails – stormwater retention**
- Roadway projects
- **Utility/electrical grids**, solar lights

- Complete streets and park/trail investment
- **Ecotourism**
- Connectivity projects
- **Nature sites**
- Sidewalk studies
- Free transit (South Padre Valley Metro)

Sustainable  
Future



- Multimodalism
- Roundabouts
- Increase/promote transportation system
- Transit tracking software
- EV charging stations
- Outdoor activities throughout region

- Social media presence

Connected  
Communities



- Redefining “Resilience” in the valley
- Bike/ped culture

- **Small city coalition**
- **Improved regional coordination**
- **Collaboration**

Collaborative  
Governance



- **Border coordination**
- **Regional collaboration**

- State/Federal funding
- Population growth
- Grant recipients
- **Higher education**
- Employment opportunities

Other

- Positive promotion of the RGV
- Revisioning the RGV

## Weaknesses

- Facilities and operations being underutilized
- Lack of trees
- Power outages
- **Flooding**
- **Outdated/poor state of equipment (bus signs, traffic signals, facilities)**

Adaptive  
Development



- New developments should have updated standards
- **Car centric**
- Micro transit

Sustainable  
Future



- **Education**
- Communications

Connected  
Communities



Other

- **Extreme weather**
- **State of existing infrastructure**

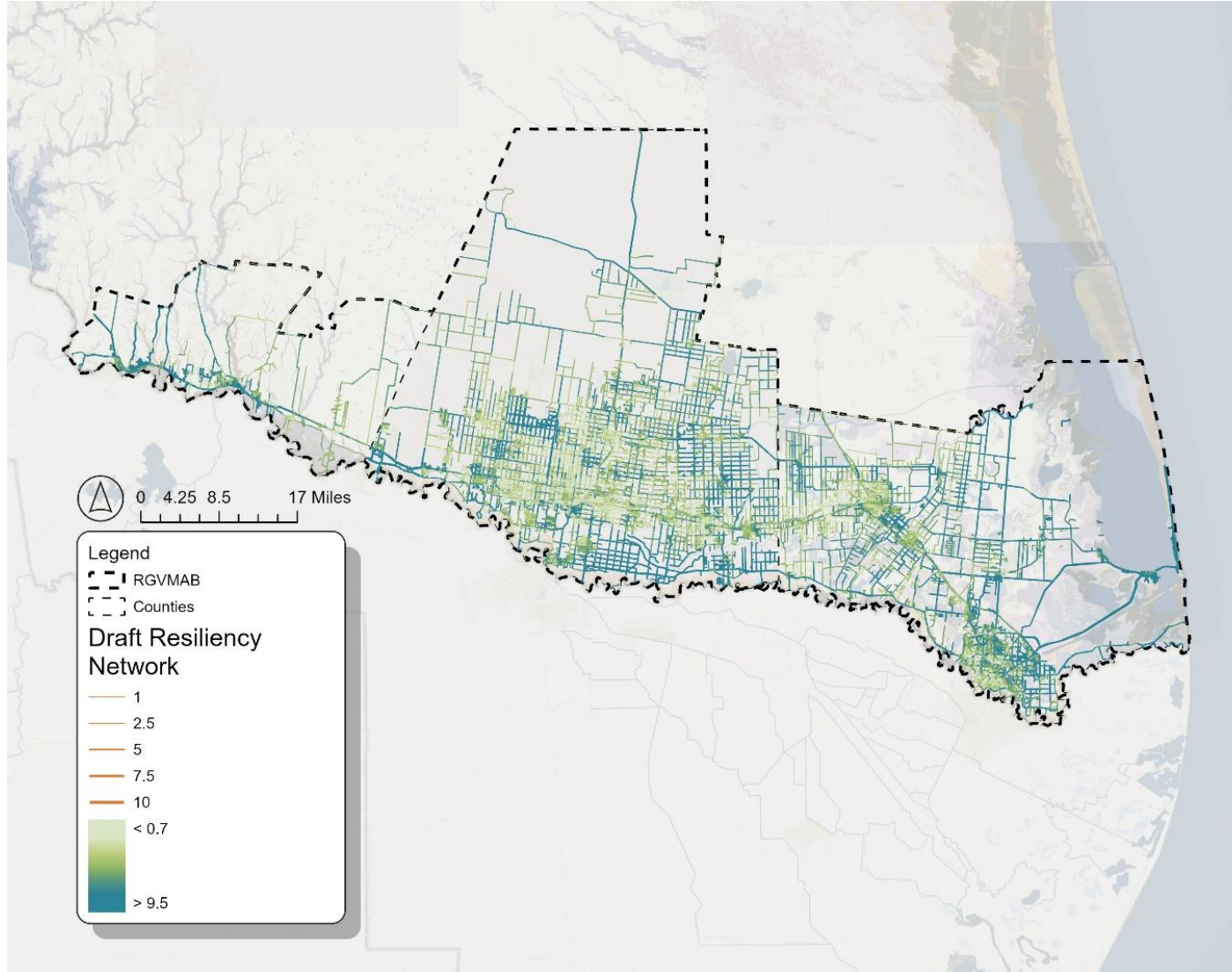
- Vertical growth vs. Sprawl

- Lack of public education/outreach

- Funding
- Affordability
- Mindset/attitudes and culture surrounding change and development

## Threats

# Risk Prioritization Tool



Roadway scoring based on vulnerability, criticality, and connectivity variables.

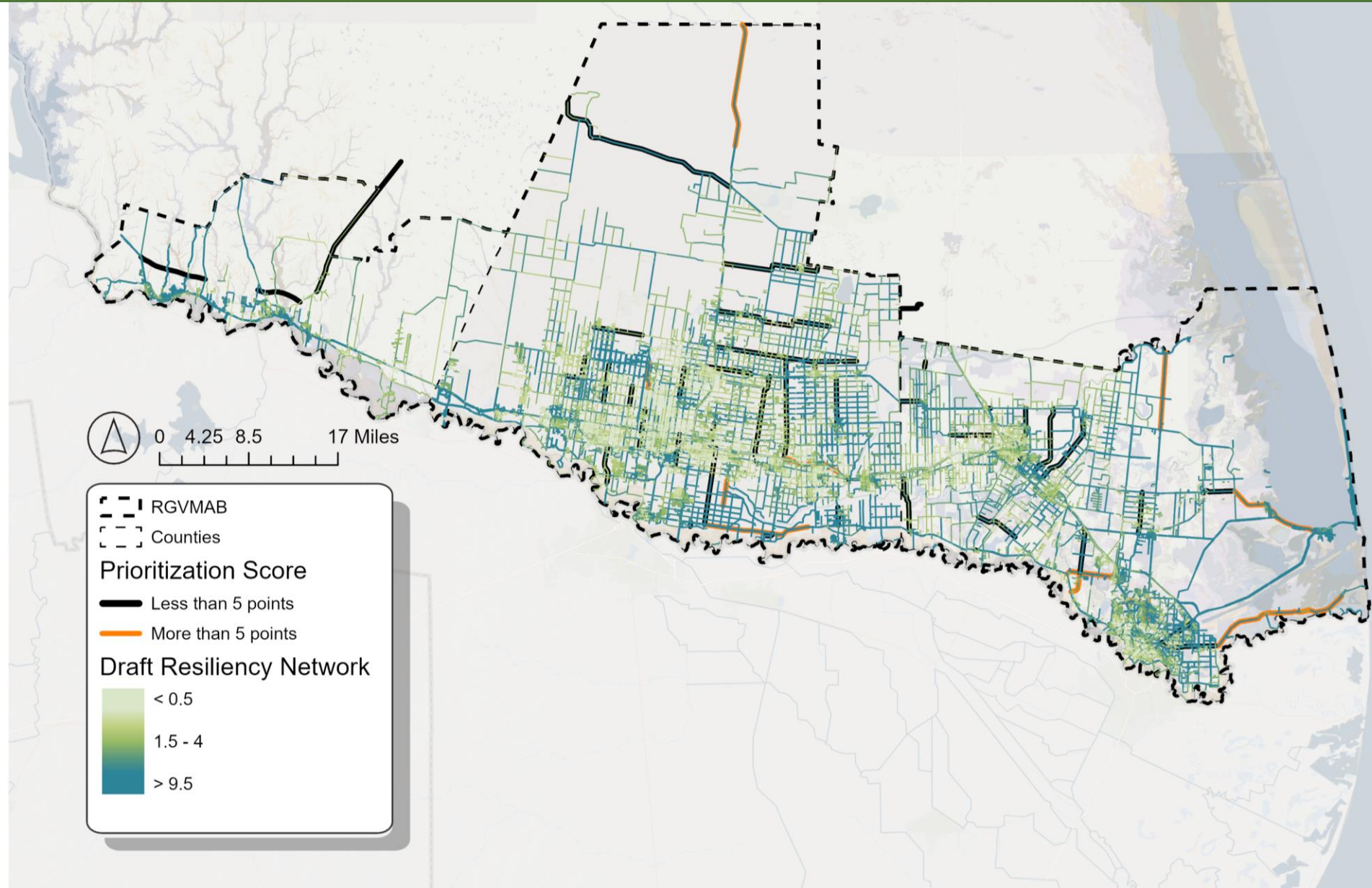
Example Variables:	
Community Assets	Colleges, nursing homes, SNAP retailers
Vital Assets	Fire stations, power plants
Connectivity	Colonias, mobile home parks, equity zones
Criticality	Evacuation route, STRAHNET
Vulnerability	Flooding, heat, high growth areas

# StoryMap for Identifying a Resilient Transportation System

The System highlights roadway assets that are crucial to the RGV due to their increased connectivity, criticality, and/or vulnerability.

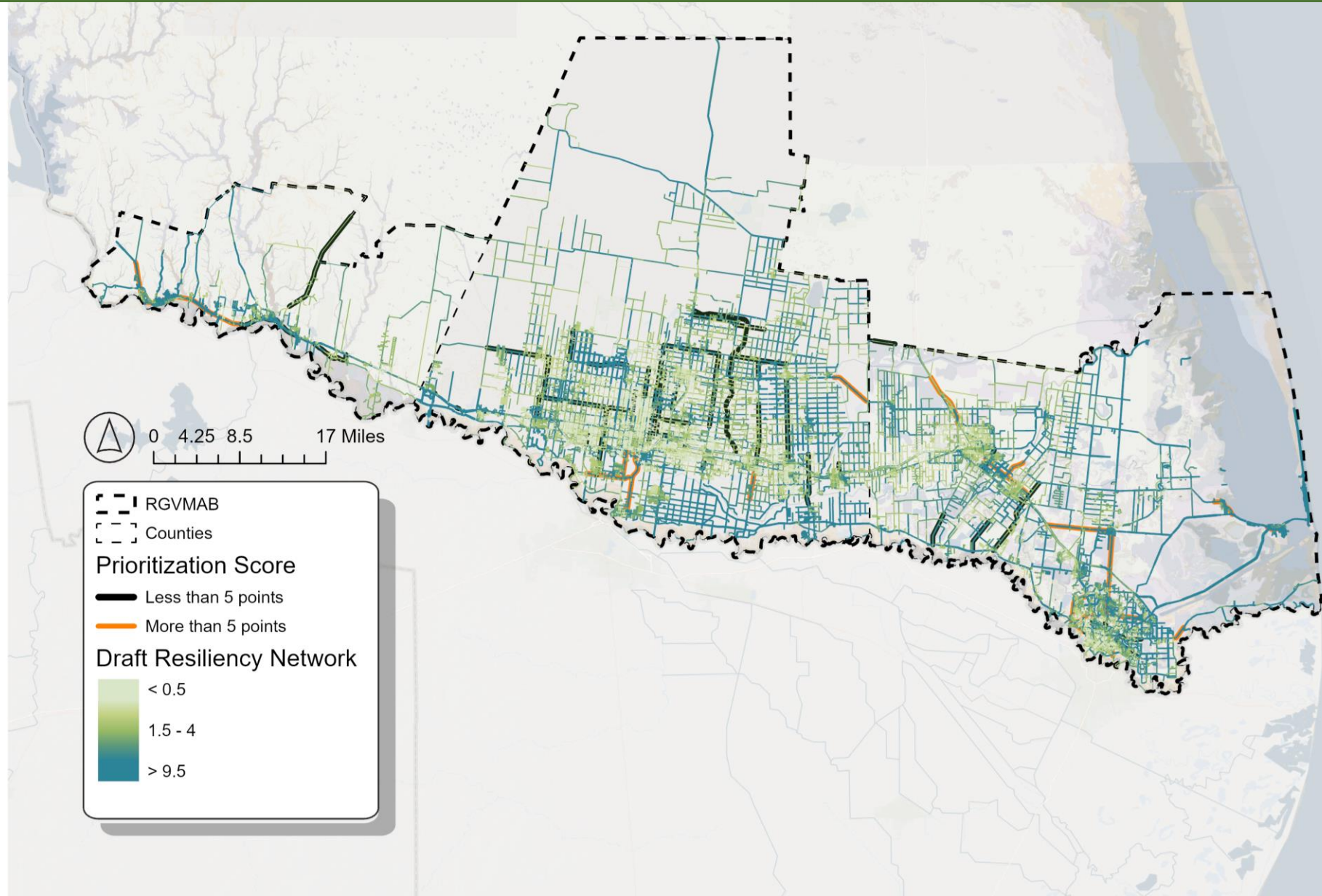


# Risk Prioritization Tool: Projects 5-10 Years Out



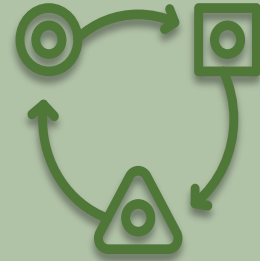


# Risk Prioritization Tool: Projects 10+ Years Out





Connected  
Communities



Adaptive  
Development



Sustainable  
Future



Just Choices



Collaborative  
Governance

# Draft Recommendations for Feedback

# Adaptive Development Recommendations

## Recommendations

## General Benefits

Wetland preservation, bioswales and rain gardens, dune restoration, green corridors

- Flood mitigation or stormwater management
- Reduce urban heat
- Recreation opportunities

- Improve air and water quality
- Enhance aesthetics
- Wildlife habitat

Dune restoration, elevate structures/roads

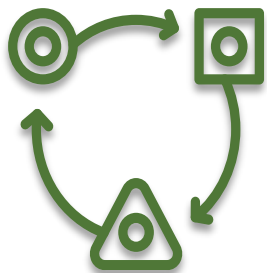
- Protect infrastructure from damage

Replace aging water infrastructure, water reuse systems

- Increase water conservation

Eliminate parking minimum

- Reduce urban heat & encourage alt. transportation



**Adaptive  
Development**

# Adaptive Development Recs. Continued

## Recommendations

## General Benefits

Fire breaks, limit development in WUI

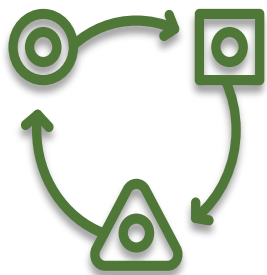
- Protect from fire
- Allow for **trail development**

Use non-combustible building materials

- Protect from fire

Decrease permeability of concrete, protect steel rebar

- Reduce concrete corrosion
- Prolong infrastructure lifespan
- Save on repair costs



Adaptive  
Development

# Sustainable Future Recommendations

## Recommendations

## General Benefits

Expand land conservation

- Wildlife habitat
- Ecosystem services
- Reduce heat
- Natural beauty

Outdoor education, **sustainable tourism**

- Environmental awareness
- Economic activity

Vision Zero, **increase walkability**

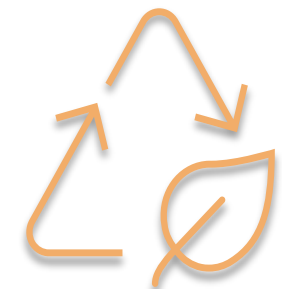
- Advance safety for pedestrians and cyclists
- Encourage active transportation

Preserve existing buildings and **build resilient new ones**

- Reduce heat
- Energy and water conservation

**Improve infrastructure** in colonias

- Advance safety and equity



**Sustainable  
Future**

# Sustainable Future Recommendations

## Recommendations

## General Benefits

Reduce emissions, **electrify vehicles, promote transit and active transportation**

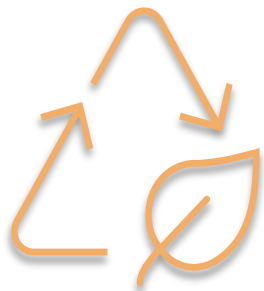
- Improve air and water quality
- Health benefits
- Lower noise pollution

- Reduce CO2 emissions

Green infrastructure and green streets

- Enhance aesthetics
- Wildlife habitat
- Improve air and water quality

- Reduce heat
- Carbon capture



Sustainable  
Future

# Connected Communities Recommendations

## Recommendations

## General Benefits

**Public education on risks, natural hazard, sustainability, and the environment**

- Increase awareness and safety

Evacuation routes

- Advance awareness and safety
- Increase resilience
- Improve mobility



Connected  
Communities

# Collaborative Governance Recommendations

## Recommendations

## General Benefits

Interjurisdictional and external (public) communication

- Improve regional sustainability and resiliency
- Build public trust

Data sharing

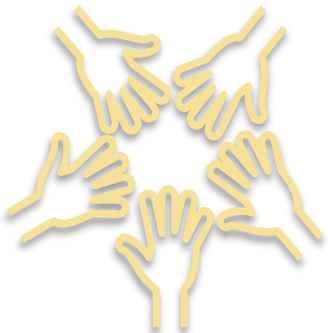
- Improve regional sustainability and resiliency
- Improve work efficiency and accuracy

Routinely discuss sustainability and resilience

- Improve regional sustainability and resiliency
- Build on existing projects

Local resilience plans

- Improve regional sustainability and resiliency



**Collaborative  
Governance**



# Just Choices Recommendations

## Recommendations

## General Benefits

Equitable decision making and prioritization

- Increased equity, justice, and trust

Understand needs of marginalized communities

- Increased equity
- Community involvement and input



Just Choices

# Implementation

- 60+ individual action item recommendations based on research/best practices for each guiding principle

Adaptive Development Action Items				
Action item	Supporting Actions	Who is Involved?	Timeframe	Possible Funding Source(s)
Wetland preservation and restoration	Integrate wetland restoration and creation into new and existing recreational trails and active transportation projects	Municipalities (especially in Cameron County), TPWD	Long-term	PROTECT Grant (FHWA)
				Five Star and Urban Waters Restoration Grant (NFWF)
				National Coastal Resilience Fund (NFWF)
				Coastal Zone Management Habitat Protection and Restoration Grants (NOAA)
				Transformational Habitat Restoration and Coastal Resilience Grants (NOAA)
				Wetland Reserve Easement Program (NRCS)
Bioswales and rain gardens	Identify public right of ways and roadways where bioswales, rain gardens, or other green stormwater infrastructure could be constructed	Municipalities, RGVMPPO, TxDOT	Short-Term	PROTECT Grant (FHWA)
				Texas Clean Water State Revolving Fund
				Five Star and Urban Waters Restoration Grant Program (NFWF)
				National Fish and Wildlife Foundation America The Beautiful Challenge
Update development guidelines to support resilience to floods	Limit development in hazardous areas through building codes, zoning, and land use planning	Municipalities	Short-Term	Resilient Communities Program (Texas GLO)
	Encourage options for nature-based solutions like green infrastructure in private development	Municipalities	Short-Term	N/A

# Implementation

Sustainable Future Action Items				
Action Item	Supporting Actions	Who is Involved?	Time-frame	Possible Funding Source(s)
Preserve and expand land conversation	N/A	Municipalities, TPWD	Long-term	Wildlife Crossings Pilot Program (FHWA)
				Local Parks Grants (Texas Parks and Wildlife)
				National Coastal Resilience Fund (NFWF)
Promote outdoor education and sustainable tourism	Work with parks and local schools to promote outdoor education programs	Municipalities, TPWD, nonprofit organizations	Short-Term	Local Parks Grants (Texas GLO) Philanthropic grant programs
	Consider fare-free transportation to conversation attractions to promote sustainable tourism	Municipalities, RGVMPPO, TPWD	Mid-term	N/A
Expand land area protected for conservation	Prioritize areas with high biodiversity and environmental importance	Municipalities, TPWD	Long-term	Texas Farm and Ranch Lands Conservation Program (Texas Parks and Wildlife)
				Conservation Innovation Grants (USDA)
Enforce strict penalties for illegal activities, such as dumping, in protected areas	N/A	Municipalities, TPWD	Short-Term	N/A
Work on connecting existing protected areas through wildlife corridors	Explore gaps in critical wildlife corridors	Municipalities, TPWD	Long-term	INFRA Grant (DOT)
				Wildlife Crossings Pilot Program (FHWA)
				National Fish and Wildlife Foundation America the Beautiful Challenge
Leverage existing ecotourism destinations to promote sustainable tourism that will help financially support protected lands	N/A	Municipalities, TPWD	Mid-term	N/A

# Implementation

Connected Communities Action Items				
Action item	Supporting Actions	Who is Involved?	Time-frame	Possible Funding Source(s)
Natural hazard education	Create public outreach campaigns for public education on various natural disasters and hazards	Municipalities, RGVMPPO	Short-Term	Resilient Communities Program (Texas GLO)
Sustainability and environmental education	Create educational programs for sustainability and environmental awareness	Municipalities, RGVMPPO	Short-Term	Five Star and Urban Waters Restoration Grant Program (NFWF)
				Local Parks Grants (Texas Parks and Wildlife)
				National Environmental Education Foundation Programs (NEEF)
				Environmental Literacy Program Grants (NOAA)
Use existing public involvement activities to offer information about resilience and sustainability initiatives	N/A	Municipalities, RGVMPPO	Short-Term	N/A
Support social networks through the use of public and community spaces and events	N/A	Municipalities, RGVMPPO	Short-Term	N/A
Use language that is easy to understand when explaining concepts to the public and make all material available in both Spanish and English	N/A	Municipalities, RGVMPPO	Short-Term	N/A
Create a transit plan for the evacuation of vulnerable populations	N/A	Municipalities, TxDOT, RGVMPPO	Short-Term	PROTECT Grant (FHWA)
Communicate evacuation plans and procedures	N/A	Municipalities, TxDOT, RGVMPPO	Short-Term	N/A
Evaluate the conditions and maintenance procedures of evacuation routes	N/A	Municipalities, TxDOT, RGVMPPO	Short-Term	PROTECT Grant (FHWA)

# Implementation

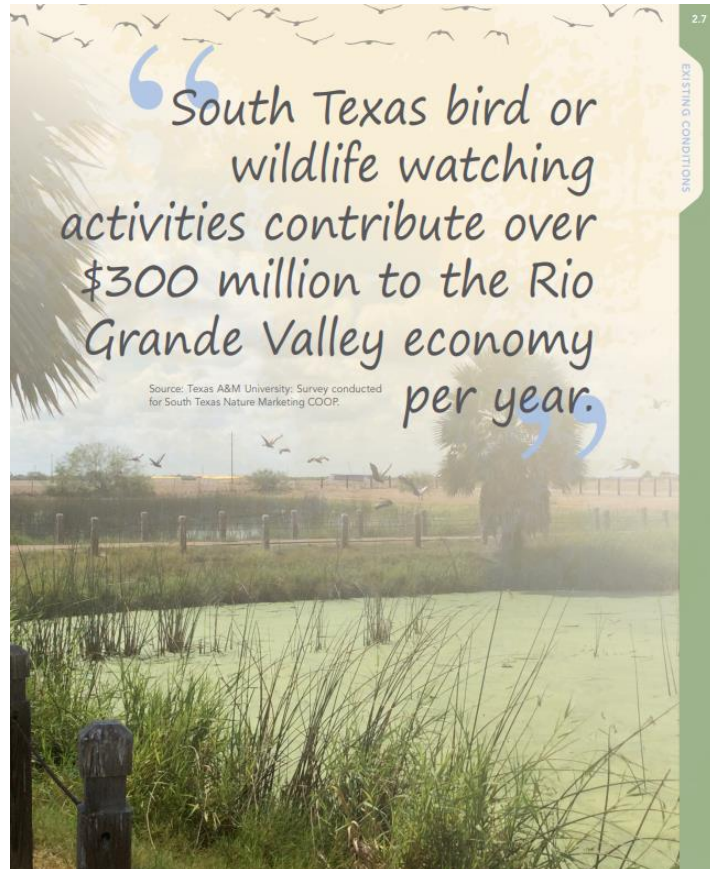
Just Choices Action Items				
Action Item	Supporting Action	Who is Involved?	Time-frame	Possible Funding Source(s)
Prioritize and evaluate activities for equitable outcomes	Invest resilience money equitably by targeting investments in disadvantaged areas	Municipalities, RGVMPPO	Short-Term	N/A
	Use the resilience priority investment tool to make decisions	Municipalities, RGVMPPO	Short-Term	N/A
	Collect data to establish a benchmark of outcomes for vulnerable populations	Municipalities, RGVMPPO	Short-Term	N/A
Expand transportation access to serve "transit deserts" in underserved communities	N/A	Municipalities, RGVMPPO	Mid-term	RAISE Grant (DOT)
Provide business continuity education for small and disadvantaged businesses	Utilize resources such as FEMA's Office of National Continuity Programs and Ready.gov	Municipalities, Chambers of Commerce	Short-Term	N/A
Continue using multilingual outreach programs	N/A	Municipalities, RGVMPPO	Short-Term	N/A
Define and state clear equity goals in new plans	N/A	Municipalities, RGVMPPO	Short-Term	N/A
Create measurable indicators for equity in transportation and resiliency plans	N/A	Municipalities, RGVMPPO	Short-Term	N/A
Oversample vulnerable populations to ensure the most feedback possible in surveys	N/A	Municipalities, RGVMPPO	Short-Term	N/A
Consider anti-displacement policies to mitigate displacement by new projects	N/A	Municipalities, RGVMPPO	Short-Term	N/A
Conduct accessibility audits on transportation providers	N/A	Municipalities, RGVMPPO	Mid-term	

# Implementation

Collaborative Governance Action Items				
Action Item	Supporting Action	Who is Involved?	Time-frame	Possible Funding Source(s)
Communication with the public	Communicate with the public frequently and consistently	Municipalities, RGVMPPO	Short-Term	Building Resilient Infrastructure and Communities Grant (FEMA)
	Understand marginalized communities and their needs	Municipalities, RGVMPPO	Short-Term	Inflation Reduction Act Environmental and Climate Justice Program (EPA)
				Cultural and Community Resilience Program (National Endowment for the Humanities)
				Our Town Creative Placemaking Grant (National Endowment for the Arts)
Data sharing	Establish and enable regional data sharing practices	Municipalities, RGVMPPO	Short-Term	N/A
Develop local resilience plans	Ensure resilience plans are coordinated throughout the region	Municipalities	Mid-term	Regional Catastrophic Preparedness Grant Program (FEMA)
Continue to strengthen coordination between governments in the region and work towards common goals together	N/A	Municipalities, RGVMPPO	Short-Term	N/A

# Examples of current efforts to continue

## Comprehensive plans and park plans



Source: San Benito Parks and Recreation Master Plan



Source: myspi.org

## Dune restoration and management

## County Hazard Mitigation Plans



### Starr County Multi-Jurisdiction Hazard Mitigation Plan

2019-2024

DEVELOPED BY:



# Thank You!

**Javier Dominguez Jr.**  
RGVMPO Project Lead  
jdominguez@rgvmppo.org  
(956) 682-3481

**Ben Magallon, AICP, TSSP-Rail**  
ATG Project Manager  
bmagallon@emailatg.com  
(512) 821-2081

**René Pastorek, AICP, ENV SP**  
ATG Deputy Project Manager  
rpastorek@emailatg.com  
(504) 217-5836