



RGVMPO FY 2025-2027 Transportation Alternatives Set-Aside Working Group Meeting #2

September 13, 2024



TASA Working Group Meeting #2 Agenda



- I. Review TASA Working Group Meeting #1 Feedback
- II. Discuss Draft TASA Program Guide & solicit feedback via Mentimeter
- III. Discuss Draft TASA Application & solicit feedback via Mentimeter
 - Part A: project proposal and evaluation questions
 - Part B: project information form (including budget breakdown)
 - Part C: SPA form (to determine project leads and oversight levels)
- IV. Discuss Draft TASA Scoring Criteria & solicit feedback via Mentimeter
 - Project Readiness
 - Resilience & Safety Benefits
 - Equity
 - Connectivity
- V. Timeline of Activities

I. Review TASA Working Group Meeting #1 Feedback



Overall Program Feedback?

Last programmed call went very well. Only minor tweaks are really needed

Provide examples from across the nation that were funded with TASA funds

Program gets better every year!

Eva and Melany 2024

Evaluators should have participated in 2 of the 3 workshops.

Persistency in pushing program!

I liked the idea of having non-biased evaluators. I am all for seeking a RFQ to have evaluators from not our region

I do like the idea about small cities vs large city pot of TASA.

II. Discuss Draft TASA Program Guide & solicit feedback via Mentimeter



- An Appendix will be developed with a map of previously awarded RGVMPO TASA:
 - FY21-22 Projects
 - FY23-24 Projects
- RGVMPO Staff are discussing how to communicate why the projects were:
 - successful through the competitive process.
 - Successful in the obligation of funds (project development).

The image shows the cover and table of contents for the 'FY 2025 - 2027 TRANSPORTATION ALTERNATIVES SET-ASIDE (TASA) PROGRAM GUIDE'. The cover is blue and features the RGVMPO logo, the title, the date 'NOVEMBER 1, 2024 - DRAFT', and a small icon of a person walking with a bicycle. The table of contents is on the right side of the image.

| TABLE OF CONTENTS | |
|------------------------------------------------------------------------------------|----|
| A. Summary of Funding Opportunity | 1 |
| B. Transportation Alternatives Set-Aside (TASA) Eligibility and Requirements | 4 |
| C. Project Evaluation and Selection Criteria | 7 |
| D. Allowable Costs | 10 |
| E. Project Sponsor Workshop Schedule..... | 12 |
| F. Selection of TA Projects by the Transportation Policy Board | 13 |
| G. Project Elimination | 13 |
| H. Project Implementation | 14 |
| I. Bikeway Terminology | 23 |
| J. Additional Weblinks | 24 |
| K. Definitions and Terminology..... | 27 |

Red – draft revisions made

Join at [menti.com](https://www.menti.com) | use code **3828 3231**

Instructions

Go to

www.menti.com

Enter the code

3828 3231



Or use QR code

Draft Program Guide Feedback



Place a pin on the section of the Draft Program Guide needs additional work:

TABLE OF CONTENTS

| | |
|-----------------------------------------------------------------------------------|----|
| A. Summary of Funding Opportunity | 1 |
| B. Transportation Alternatives Set-Aside (TASA) Eligibility and Requirements..... | 4 |
| C. Project Evaluation and Selection Criteria..... | 7 |
| D. Allowable Costs..... | 10 |
| E. Project Sponsor Workshop Schedule | 12 |
| F. Selection of TA Projects by the Transportation Policy Board | 13 |
| G. Project Elimination..... | 13 |
| H. Project Implementation..... | 14 |
| I. Bikeway Terminology | 23 |
| J. Additional Weblinks | 24 |
| K. Definitions and Terminology | 27 |

BASED ON THE FEEDBACK FROM THE LAST MEETING, ONLY MINOR CHANGES ARE RECOMMENDED

Please share any additional feedback or comments regarding the Draft FY 25-26 TASA Program Guide:

No further clarification

N/A

Emphasis on project readiness with the exception of Environmental (typically done with TxDOT after AFA is signed).

Need clarification on using RFP or RFQ process by the LG

Guide is presented well

It looks great!

Can you allow projects to be submitted to both the RGVMPO and the TA calls?
It's completely arbitrary



7



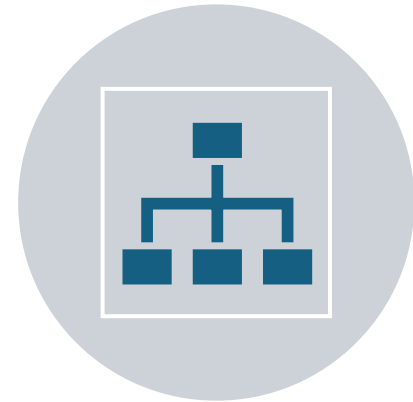
III. Discuss Draft TASA Application & solicit feedback via Mentimeter



PART A: PROJECT PROPOSAL AND
EVALUATION QUESTIONS



PART B: PROJECT INFORMATION
FORM (INCLUDING BUDGET
BREAKDOWN)



PART C: SPA FORM (TO DETERMINE
PROJECT LEADS AND OVERSIGHT
LEVELS)



PART A: PROJECT PROPOSAL AND EVALUATION QUESTIONS



RGVMPO FY2025-2027 TRANSPORTATION ALTERNATIVES APPLICATION - Part A

For Projects in the [RGVMPO Metropolitan Area Boundary \(MAB\)](#) (Cameron, Hidalgo, and Starr counties, Texas)

| | | |
|-------------------------------------------------------------------------------------------------------------------------------------------------------------------------------------|---------------|-----------|
| Project Sponsor Name | | Date |
| Point-of-Contact Person | | Title |
| Phone Number | Email Address | |
| TA Funding Request | Local Match | |
| Project Name | | |
| Project Description (Scope of Work) Attach location and site maps, drawings, and photographs. Here's a tutorial for creating and sharing a google map for guidance. | | |
| Project Length | Limits From | Limits To |

1. Eligible Project Sponsor Category: Please select the applicable project sponsor.

2. Project Type: Please select the project type for this project. Check all that apply.

- Multiuse Path or Protect Bike Lane
- Bicycle/Pedestrian Signal or Crossing
- Safe Routes for Non-Drivers Travel Plan Traffic Calming
- On-Road Bicycle Improvements
- Sidewalk
- Historical Preservation of Transportation Facility
- Environmental Mitigation
- Safe Routes Promotional Activities
- Vegetation Management
- Removal of Outdoor Advertising
- Bike Parking
- Overlooks or Viewing Areas
- Recreational Trails
- Project is a plan/study for future construction.
- Project will consist of construction of a new infrastructure and replace some existing facility.
- Project is 100% new construction.
- Other:

Page 1 of 8

A. PROJECT READINESS: Attach backup documentation and label first page as 'Exhibit A: Project Readiness'. If documentation is not provided it will be requested during review, prior to scoring, to verify eligibility of points. For all Planning Projects, please select not applicable (N/A).

3. Plans, Specifications, & Estimates Status

4. Estimated Project Completion Date

 0%
 30%
 60%
 90%
 100%

5. Right-of-Way Acquisition Status (property ownership or related agreements)

6. Railroad & Utility Status

B. RESILIENCE & SAFETY BENEFITS:

7. Non-motorized crash count/rate [\[RGVMPO GIS Analysis\]](#)
 RGVMPO Staff will analyze the proposed project route to determine the non-motorized crash count/rate and eligible scoring points.

8. Proposed safety countermeasures

- Lighting
- Signage improvements
- Pavement marking improvements.
- Speed management
- Curb extensions
- Crosswalk visibility enhancements
- Medians and/or refuge islands Rectangular
- Rapid Flashing Beacons (RRFB)
- Other:
- None

9. Proposed infrastructure elements

- Separating bicycle and pedestrians from motorized traffic (excluding side paths with more than 10 crossings/driveways per mile)
- Safe routes for non-drivers travel plan
- Bicycle/Pedestrian Crossing
- On-road bicycle facilities
- Side path with less than 10 crossings/driveways per mile
- Traffic Calming
- Replacement/Rehabilitation
- Other:

10. Yes No Project promotes/enhances Resilience & Sustainability elements

Page 2 of 8

C. EQUITY
 The BIL added a provision to the TA Set-Aside requiring that the competitive process used by a State or MPO include prioritization of project location and impact in high-need areas as defined by the State, such as low-income, transit-dependent, rural, or other areas (23 U.S.C. 133(h)(4)(D)).

11. Project Area: Is project located in a High-Need area? (is it transit dependent, rural, low-income)

12. Population Impacted: What is the potential population impacted? [\[RGVMPO GIS Analysis\]](#)
 RGVMPO staff will calculate the population residing within one mile of the project scope. If the project scope is part of a connected system, that population can be included with justification from the project sponsor.

- Avg. percent elderly
- Avg. percent disables
- Avg. percent zero car household
- Percentage living below the poverty line

13. Historically Disadvantaged Tract: Historically disadvantage tract follows the Justice 40 initiative which includes certain qualifying census tract, tribal lands, or any territory possession of the U.S. with a poverty rate of at least 20% as measured by the 2014-2018 5-year data series available from the American Community Survey of the Bureau of Census. Please [utilize this map](#) to answer.

D. CONNECTIVITY

14. Plan Consistency: Is the project consistent with regional and local plans? Provide documentation.

- Consistent with state plans (Texas Bicycle Tourism Trails Study)
- Consistent with regional plans (County-wide; Metro-area; or District-wide).
- Consistent with local plans.
- Inconsistent with plans.

15. Connects to existing multimodal transportation systems: Bike/Ped/Transit stops.

- Intersects or expands on existing bicycle lanes, sharrows, trails.
- Intersects or expands on existing sidewalks, ramps, bridges.
- Proposed project is 0 to 0.5 mile to a transit stop or transfer center.
- Does not connect to existing multimodal transportation systems.

16. Connects to public buildings, schools, and parks:

- Proposed project is 0 to 0.5 miles from a public building (city hall, libraries, recreation centers, etc.).
- Proposed project is 0 to 0.5 miles from a school (public, charter, higher education, etc.).
- Proposed project is 0 to 0.5 miles from a park (local, state, or federal).
- Does not connect to public buildings, schools, and parks.

17. Multi-jurisdictional connections or 10+ miles in length:

- Connects across municipal (within city limits) and county jurisdictions (outside city limits).
- Connects three or more municipalities/county limits.
- Proposed project is 10 miles or more in length (spans across one city).
- Does not connect to outside city limits.

Page 3 of 8



PART B: PROJECT INFORMATION FORM (INCLUDING BUDGET BREAKDOWN)



Project Information Form- Part B

| | |
|--------------------------------------------------------------------------------------------------------------------------------------------------------------------------------------------------------------------------------------------------------------------------------------------------------------------------------------------------------------------------------------------------------------------------------------------|-----------------------------------------------------------------------------------------------------------------------------------------------------------------------------------------------------------------------------------------------------------------------------------------------------------------------------------------------------------------------------------------------------------------------------------------------------------------------------------------------------------------------------------------------------------------------------------------------------------------------------------------------------------------|
| <p>Project CSJ: <u>Pending Funding Award</u> HWY: <u>N/A</u> Project Limits: _____ County: _____ Functionally Classified: <u>N/A</u> Project Estimate Total Amount: _____ Let Date: <u>FY</u> - <u> </u> Scope of Work: _____ _____ _____ Letting by: <u>LG PROJECT SPONSOR</u></p> | <p>Project Manager TxDOT Project Manager (PM): <u>TxDOT to Provide</u> LG PM & Contact Information: _____</p> <p>Sponsor Local Government's (LGs) DUN #: _____ Project Sponsor: _____ Project Sponsor Address: _____ City: _____ County: _____ State: _____ Zip code (*****-****): _____ Interlocal Agreement Required: <u>select</u> Interlocal- Names of LGs involved: _____ Interlocal Agreement Executed: _____ Interlocal Agreement - Execution Date: _____</p> |
|--------------------------------------------------------------------------------------------------------------------------------------------------------------------------------------------------------------------------------------------------------------------------------------------------------------------------------------------------------------------------------------------------------------------------------------------|-----------------------------------------------------------------------------------------------------------------------------------------------------------------------------------------------------------------------------------------------------------------------------------------------------------------------------------------------------------------------------------------------------------------------------------------------------------------------------------------------------------------------------------------------------------------------------------------------------------------------------------------------------------------|

| Description | Funding Source | Project Cost | | | Reimbursement to LG |
|----------------------------------------------------------------|---------------------|---------------------------------------------|----------|-----------------|---------------------|
| | Category 9 or Local | LOCAL GOVERNMENT'S LATEST COST ESTIMATE (3) | Let Year | Federal 80% (4) | Yes or No (5) |
| PS&E (Preliminary Engineering)/Survey/Geo/ Pavement Design (1) | SELECT - | | FY - | | SELECT - |
| Environmental | SELECT - | | FY - | | SELECT - |
| Right of Way (ROW) | SELECT - | | FY - | | SELECT - |
| Utilities | SELECT - | | FY - | | SELECT - |
| Construction (2) | SELECT - | | FY - | | SELECT - |
| Construction (local 100%)* | SELECT - | | FY - | | SELECT - |
| Construction Engineering | SELECT - | | FY - | | SELECT - |
| Direct State Cost (15% of total project cost): | SELECT - | | FY - | | SELECT - |
| Project Total | | \$ 0 | | | |

(1) Usually for Category 9 Planning Funded Projects. Locally Funded for Construction projects
 (2) For Category 9 Construction Funded Projects. For further guidance, please use [TxDOT's Construction Cost Estimates Assistance Tool](#).
 (3) Please provide the total cost estimates for each phase of the project. Some of these will be \$0.
 (4) Only for the 80% Federal amount to be awarded to the project.
 (5) Only Category 9 Funds are reimbursable.
 * The Local Government is responsible for 100% of the construction costs exceeding the approved federal funding.

Page 4 of 8



PART C: SPA FORM (TO DETERMINE PROJECT LEADS AND OVERSIGHT LEVELS)



PROJECT B

| | | | |
|-----------------------------------------------------------|------------|---------|---------|
| Name of previously completed project | | | |
| Describe type of work | | | |
| Describe any complex items of work | | | |
| Construction cost | Estimated: | | Actual: |
| Letting date | Scheduled: | | Actual: |
| Contract time | Scheduled: | | Actual: |
| LG management activities performed by LG personnel | | | |
| LG management activities performed by consultants | | | |
| Name of current LG employee contact who worked on project | | Phone # | |
| | | Email | |

2. The capability of the LG to perform the type of work proposed or to award and manage a contract for that work in a timely manner, consistent with federal, state, and Department regulations, standards, and specifications

Please describe the LG's proposed personnel.

| | | | |
|-------------------------------------------------------------------------|--|----------------|--|
| Name of person to serve in the position of Responsible Person in Charge | | Position/Title | |
|-------------------------------------------------------------------------|--|----------------|--|

- Must be full-time employee of LG;
- Must be able to administer project activities (cost, time, scope, adherence to contract requirements, construction quality, etc.);
- Must maintain familiarity with day-to-day project operations (including project safety);
- Must make or participate in decisions about change orders or supplemental agreements;
- Must visit and review the project regularly;
- Must review financial processes, transactions and documentation; and
- Must direct his/her project staff (agency or consultant) at all stages of the project.

| | | | |
|--------------------------------------------|--|----------------|--|
| Name of person to serve as Project Manager | | Position/Title | |
|--------------------------------------------|--|----------------|--|

- Responsible for daily oversight of the project;
- Primary point of communication with TxDOT for day-to-day matters;
- May be same person as Responsible Person in Charge; and
- May be local government employee or consultant.

| | |
|----------------------------------------------------------------------------------------|--|
| Project Manager's previous experience on projects of similar type, complexity and cost | |
| Project Manager's previous experience on TxDOT and/or FHWA-funded projects | |

| | | | |
|-------------------------------------------------------------|--|----------------|--|
| Name of person to serve in the position of Qualified Person | | Position/Title | |
|-------------------------------------------------------------|--|----------------|--|

- Must have completed TxDOT-required LGPP training prior to execution of AFA;
- May be same person as Responsible Person in Charge or Project Manager; and
- May be LG employee or consultant.

| | |
|-----------------------------------------------------------------------------------------|--|
| Qualified Person's previous experience on projects of similar type, complexity and cost | |
| Qualified Person's previous experience on TxDOT and/or FHWA-funded projects | |

Information submitted by:

| | |
|--------------------------------|-------------------------|
| | |
| LG representative signature | Date |
| | |
| LG representative printed name | LG representative title |

Join at [menti.com](https://www.menti.com) | use code **3828 3231**

Instructions

Go to

www.menti.com

Enter the code

3828 3231



Or use QR code

Draft Application Feedback



Please rate the following statements regarding #2. Project Type:

Project Type options should be reduced to more common scopes of work funded with TASA.

3.8

Project Types need clear definitions in the 'Definitions & Terminology' section of the Program Guide.

4.1

Project Types should be linked to visual examples for a more clear understanding of expectations.

3.9

Strongly disagree

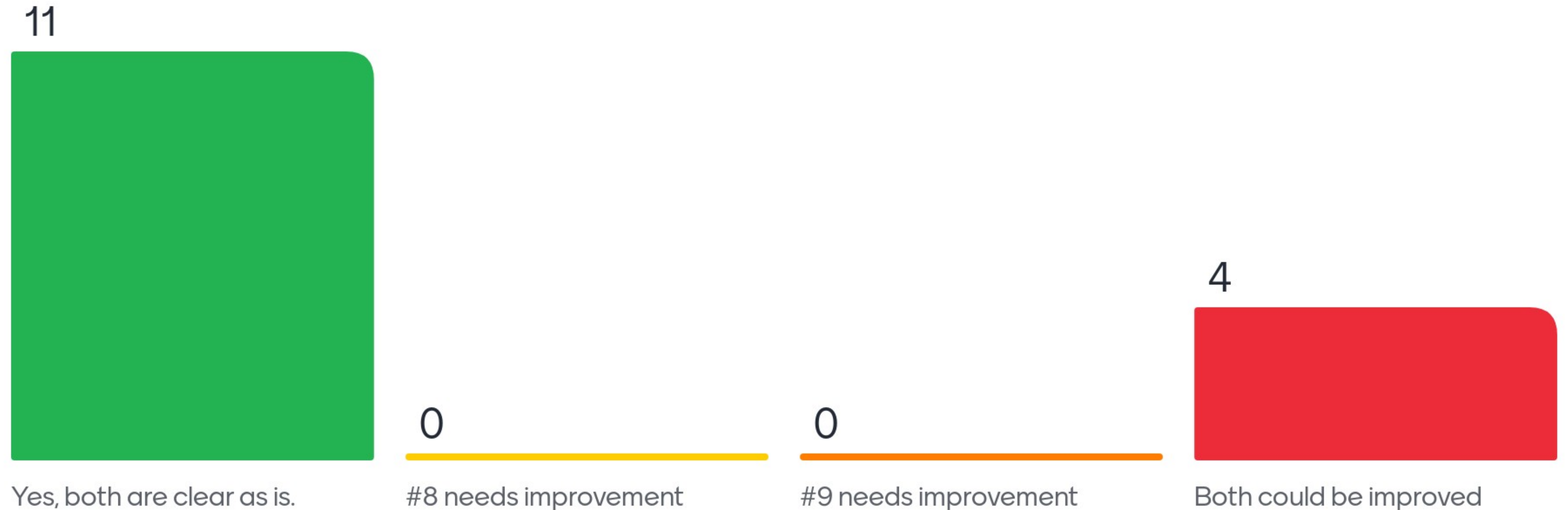
Strongly agree



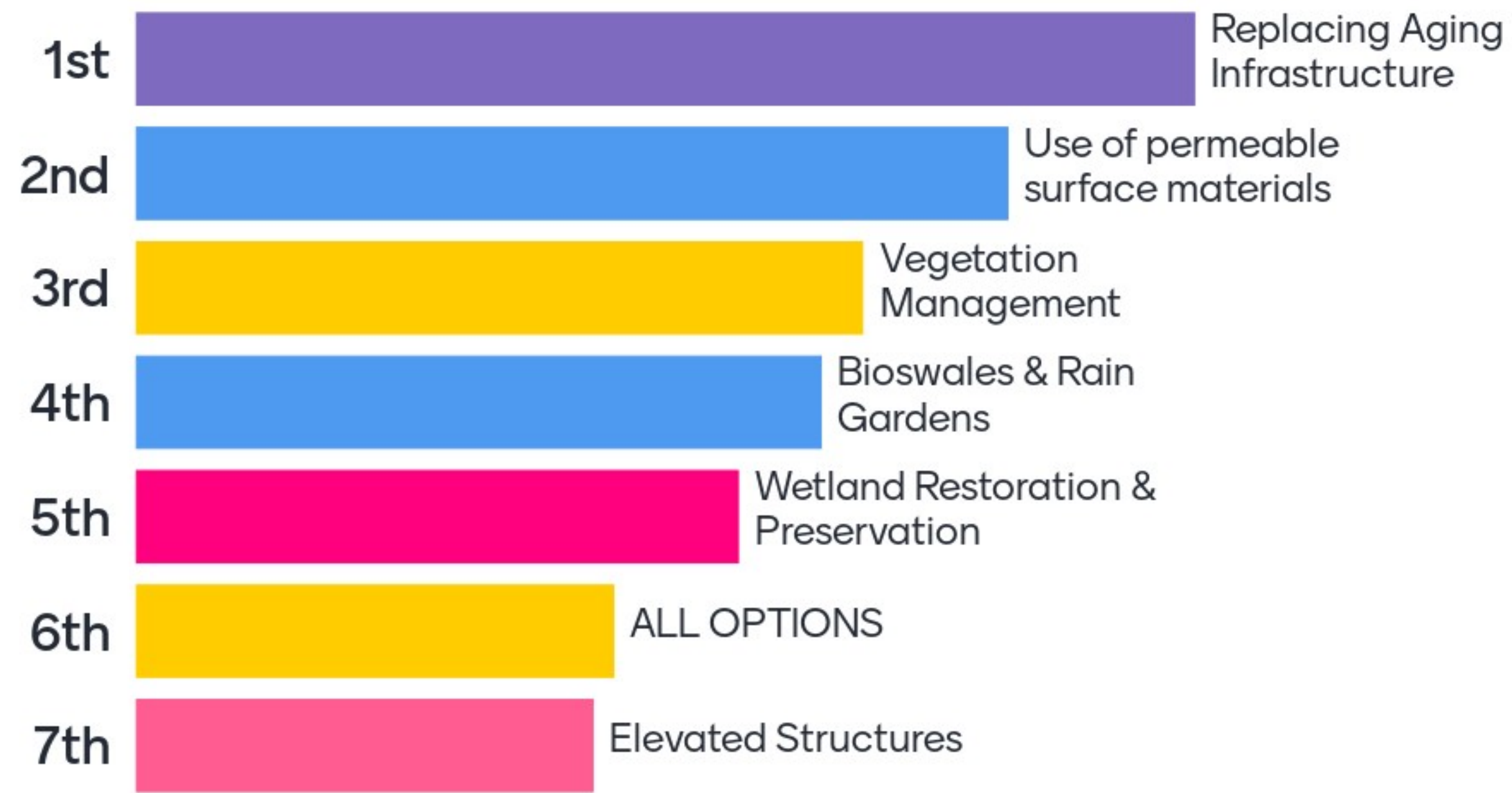
14



Are #8 Proposed Safety Countermeasures & #9 Proposed Infrastructure Elements clear?



Which Adaptive Development (Resiliency) recommendations should be added to the application



Please share any additional feedback or comments regarding the Draft FY 25-26 TASA Application:

Looks good!

it's clear

Suggest that on 8 & 9 say that more than one can be selected or only one.

For your project description on location and site maps, this should be done with GIS software in preparation to further analysis and additional needs not Google maps

Suggestion - Project readiness should include a comment box next to the percentage.

same with 11. - comment box

Yes, many do not have GIS capability or staff.

6



6



IV. Discuss Draft TASA Scoring Criteria & solicit feedback via Mentimeter

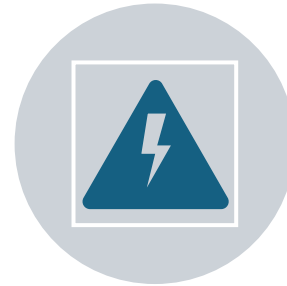


Planning vs Construction



Project Readiness*

*TBD for planning projects



Resilience & Safety Benefits



Equity



Connectivity

Planning vs Construction



Construction & Planning Scoring Criteria

| Evaluation Criteria | Description/Factors | Evaluation Method | Evaluation Details |
|------------------------------|-------------------------------------------------------------------------------------------------------------------------------------------------------------------------------------------------------------------------------------------------------------------------------------------------------------------------------------------------------------------------------------------------------------------------------------------------------------------------------------------------------------------------------------------------------------------------------------------------------------------------------------------------------------------|----------------------------------------------------------------------------------------|-----------------------------------|
| Project Readiness* | <ul style="list-style-type: none"> • Demonstrates planning/construction project funds obligating on time. • Demonstrates the ability to advance the project to construction immediately, if selected for funding • Identifies comprehensive, detailed construction/planning cost estimate. • Meets and/or exceeds design criteria established by UD Access Board, FHWA, AASHTO, TxDOT, and/or NACTO. <p>* TBD for Planning Projects.</p> | Plans, Specifications, and Estimates (PS&E) | Analysis of application responses |
| | | Environmental Documentation | Analysis of application responses |
| | | Right-of-Way (ROW) | Analysis of application responses |
| | | Railroad Impacts & Utility Coordination | Analysis of application responses |
| Resilience & Safety Benefits | <ul style="list-style-type: none"> • Demonstrated need for safety improvement and appropriate safety countermeasures. • Provides safer and/or less intimidating accommodations for walking, bicycling, and other non-motorized travel. • Enhances resilience to natural and man-made disruptions. • Promotes community resilience and sustainability, by ensuring access to alternative transportation during crises, supports vulnerable populations, and aligns with the RGVMPPO Resilience and Sustainability Analysis for environmentally and economically stable practices. | Non-motorized crash count/rate | RGVMPO GIS analysis |
| | | Proposed safety countermeasures | Analysis of application responses |
| | | Proposed infrastructure elements | Analysis of application responses |
| | | Promotes and/or Enhances Resilience & Sustainability elements | Analysis of application responses |
| Equity | <ul style="list-style-type: none"> • Enhances livability by improving active transportation access and improves modes choice in underserved communities. • Provides health and environmental benefits by incorporating landscaping, sidewalk design, crossing treatments, street furniture, bike racks, or lighting to encourage pedestrian and cyclists to utilize the area. • New BIL requirements state the competitive process used by MPOs must prioritize project location & impact in high-need areas as defined by the State, such as low-income, transit dependent, rural or other areas (23 U.S.C. 133 (h)(4)(D)). | Average percent elderly | RGVMPO GIS analysis |
| | | Average percent disabled | RGVMPO GIS analysis |
| | | Average percent zero car household | RGVMPO GIS analysis |
| | | Percentage living below the poverty line | RGVMPO GIS analysis |
| | | Within a historically disadvantaged tract | RGVMPO GIS analysis |
| Connectivity | <ul style="list-style-type: none"> • Improves active transportation access to destinations of interest such as business districts, downtown, centers of business activity, high density residential, and/or employment centers • Supports multi-modal connections. • Eliminates barriers to pedestrians, bicycle riders, and wheelchair users. • Supports investments in local/interregional tourism, especially Texas Bicycle Tourism Trails | Implements local/regional active transportation plans. | Analysis of application responses |
| | | Connects to existing Bike/Ped/Transit Facilities and/or incorporates Complete Streets. | Analysis of application responses |
| | | Connects to public buildings, schools, and parks | Analysis of application responses |
| | | Mutli-jurisdictional connections or 10+ miles in length | Analysis of application responses |

IV. Discuss Draft TASA Scoring Criteria & solicit feedback via Mentimeter



Planning vs Construction

| Criteria Category | Criteria Category Weights | |
|----------------------------------------------------|---------------------------|--------------|
| | Planning | Construction |
| Project Readiness* * TBD for Planning Projects. | N/A | % |
| Resilience & Safety Benefits | % | % |
| Equity | % | % |
| Connectivity | % | % |
| Total | 100% | 100% |

Join at [menti.com](https://www.menti.com) | use code **3828 3231**

Instructions

Go to

www.menti.com

Enter the code

3828 3231

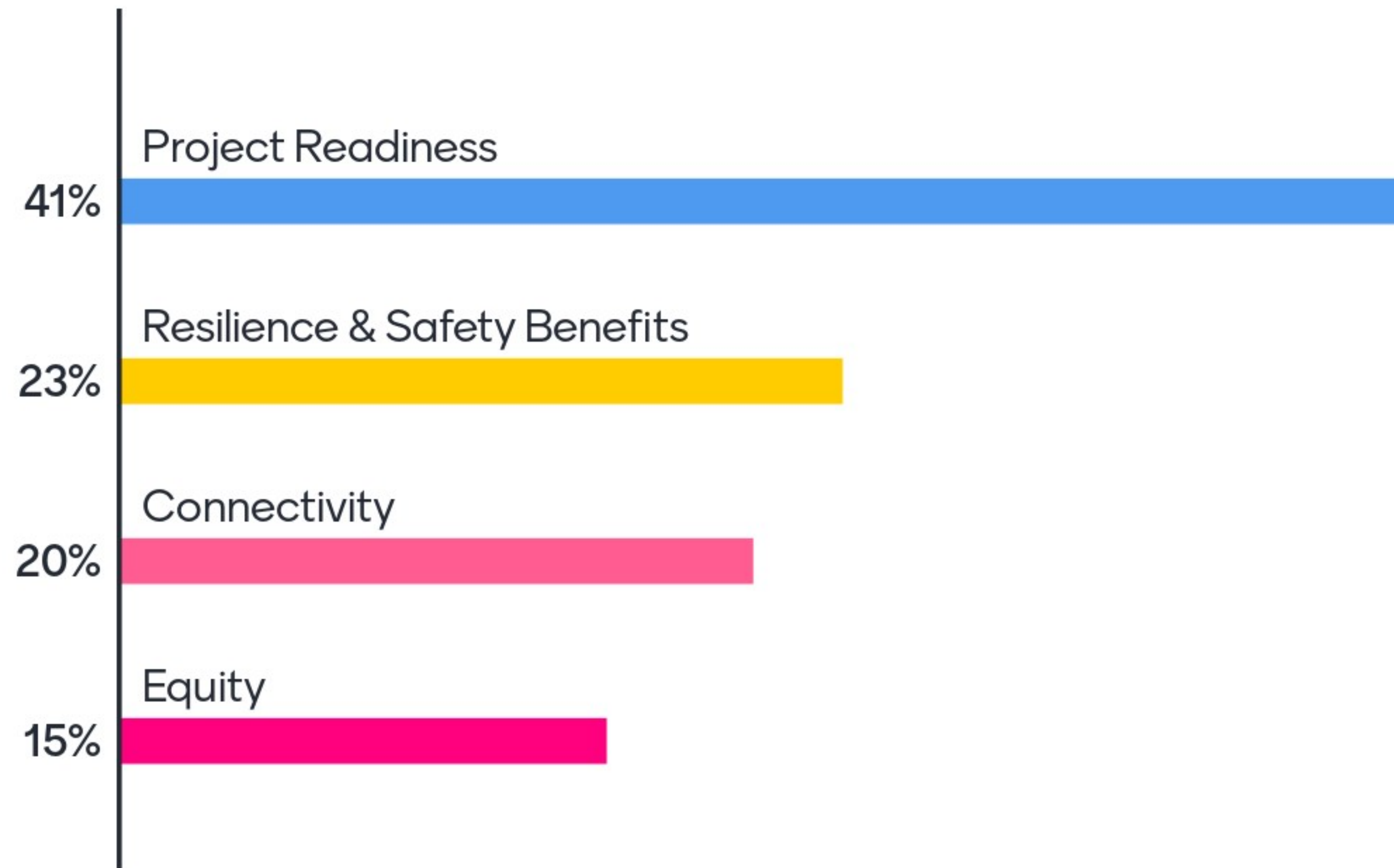


Or use QR code

Draft Scoring Criteria Feedback



Weight each criteria category for Construction Projects scoring:



How should Planning Projects communicate their Project Readiness in the Application?

1st



Planning Projects should have different scoring criteria weights than Const. Projects as PR is Not Applicable (N/A).

2nd



Incorporate points for different types of Planning Projects (ex: Master Plans, Feasibility Studies, Env., PS&E development, etc.)

3rd



Automatically receive PR pts as all planning projects help with project development.

Please share any additional feedback or comments regarding the Draft FY 25-26 TASA Scoring Criteria:

Will provide better feedback once scoring criteria percentages are defined

We need to assure scoring criteria is captured into process \ project requirements.

Please try to keep it simple. Please don't over complicate it for the reviewers. Ensure that staff factchecks the information submitted in the applications.

Can we have a defined process to get TxDOT Environmental approval for projects seeking either planning or construction projects? If possible getting a headstart prior to AFA is executed due to time

The way we include sample AFA, perhaps resources for planning scopes, procurement policy regs, etc. would be useful for planning project applicants

7



5

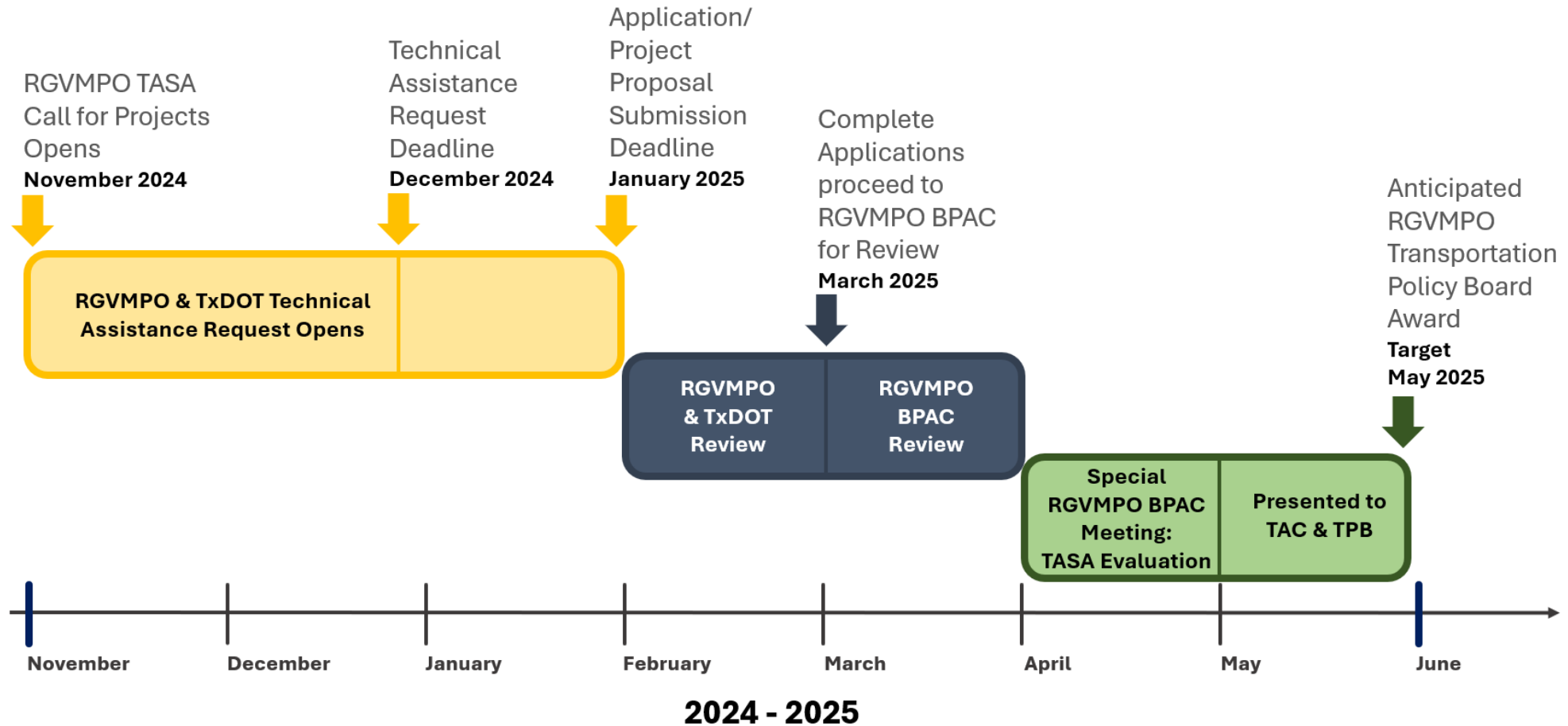


Timeline of Activities



| Month/Year | Activity | Additional Details |
|-----------------|-----------------------------------------------------------|------------------------------------------------------------|
| August 2024 | TASA Working Group Mtg. #1 (Overall Program Feedback) | August 9 th at 2:00pm -3:30pm |
| September 2024 | TASA Working Group Mtg. #2 (Feedback on Draft Materials) | September 13 th at 2:00pm -3:30pm |
| October 2024 | TASA Working Group Mtg. #3 (Finalizing Program Materials) | October 9 th at 2:00pm -3:30pm |
| November 2024 | Open FY 2025-2026 Call for Projects | November 1 st at 8am |
| December 2024 | Deadline to <i>Request</i> Technical Assistance | December 23 rd at 5pm |
| January 2025 | Application Deadline = Call Closes | January 31 st at 5pm |
| February 2025 | RGVMPO & TxDOT Application Review | <i>Staff may need to contact applicants for info.</i> |
| March 2025 | Applicants provide requested info. | <i>Clarification on project scope, budget, info., etc.</i> |
| <i>TBD 2025</i> | <i>Project Presentations at RGVMPO BPAC</i> | <i>Special Meeting for Evaluation & Scoring</i> |
| May 2025 | Action at BPAC & TAC to recommend projects for funding | Resolution to Program TA Funds at Policy Mtg. |

Timeline of Activities



****Tentative FY 2025-2027 TASA Program Call Schedule****



Thank You!

RGVMPO FY 2025-2027 Transportation Alternatives Set-Aside Working Group Meeting #3

Will be held virtually on October 9, 2024, from 2pm-3:30pm via MS TEAMS

